

Workshop on Environment Statistics and Information for Sustainable
Development in the Arab Region | 12-16 November 2018 | Beirut



Land Monitoring

Copernicus overview

- role of EEA
- core services
- land monitoring

hans.dufourmont@eea.europa.eu



European
Commission



Land
Monitoring

European programme for monitoring the Earth

Combines satellite observation data with data from sensor networks on the Earth's surface to build a comprehensive picture of our planet and its environment

Three components :

- Space
- Services (six areas: land, marine, atmosphere, climate change, emergency management and security)
- In Situ

Managed by the European Commission, implemented by MS, ESA, European Organisation for the Exploitation of Meteorological Satellites (EUMETSAT), European Centre for Medium-Range Weather Forecasts (ECMWF), EU Agencies and Mercator Océan.

EEA coordinates the Copernicus Land Monitoring Service (CLMS) and the Copernicus In Situ Component (under a Delegation Agreement with the European Commission).

Information services **freely and openly** accessible to all users



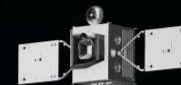


Current EEA - Eionet roles in Copernicus 2014-2020

**1. Coordination
of in situ data
component
across services**

**2. Implementation
European and local
land monitoring**

**FULL, FREE AND OPEN
ACCESS TO DATA**



-  ATMOSPHERE MONITORING
-  MARINE ENVIRONMENT MONITORING
-  LAND MONITORING
-  CLIMATE CHANGE
-  EMERGENCY MANAGEMENT
-  SECURITY

**3. Key user
MAWP 2014-2020**

copernicus
Europe's eyes on Earth



Land Monitoring

Core environment services



European
Commission



Land
Monitoring

Copernicus Emergency Service (CES)



Emergency
response

Natural disasters



anthropogenic
emergency
situations



Humanitarian crises



Activities wrt preparedness,
protection and reconstruction





Land
Monitoring

Copernicus Atmosphere Monitoring Service (CAMS)



Air quality and atmospheric composition



Variables of climate forcing



Ozone layer & UV



Solar Radiation



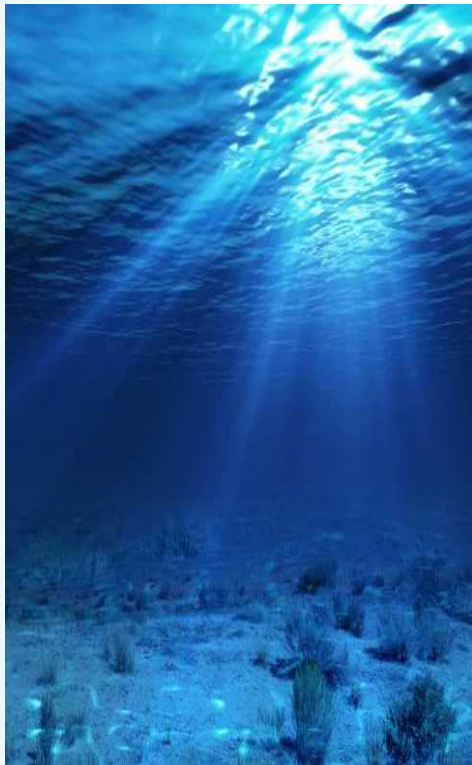
Emissions and surface fluxes





Land
Monitoring

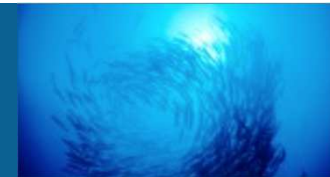
Copernicus Marine Environment Monitoring Service (CMEMS)



Maritime security



Marine resources



Coastal and marine environment



Meteorologie, seasonal predictions and climatology





Land
Monitoring

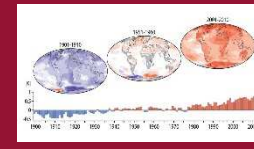
Copernicus Climate Change Service (C3S)



Estimation of essential climate variables (ECVs)



Global and regional re-analyses



Seasonal predictions and climate projections



Support to mitigation and adaptation strategies



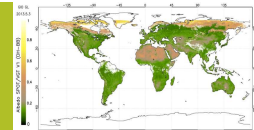


Land
Monitoring

Copernicus Land Monitoring Service (CLMS)



Systematic Biophysical Monitoring



Land Cover & Land Use mapping



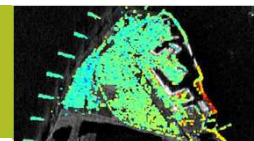
Thematic hotspot mapping



Reference data



Ground Motion service





Land Monitoring

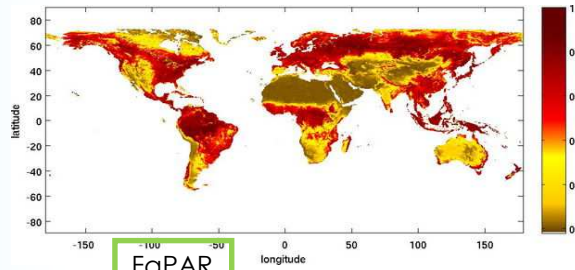
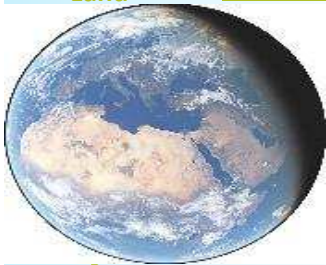
Core Land Monitoring Service

- global
- pan-European (mosaics, CLC, HRLs)
- hotspot monitoring (Urban Atlas, Riparian Zones, N2K)
- Reference data (EU-DEM, EU-hydro)
- Upcoming products (coastal, HR-phenology, Snow & ice)

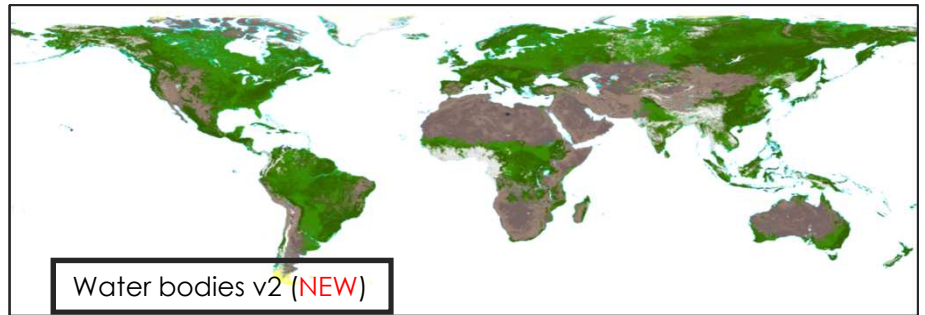


Land

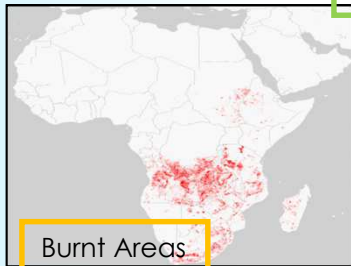
Global Land Monitoring Service (GLMS): Global vegetation, water & energy parameters



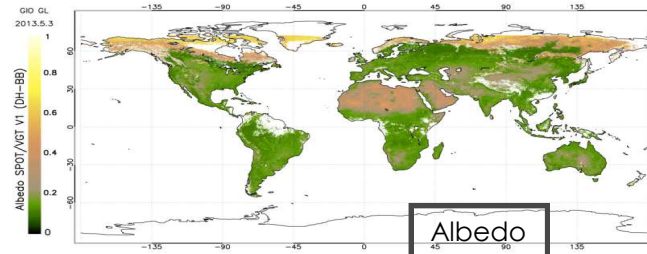
FaPAR



Water bodies v2 (NEW)



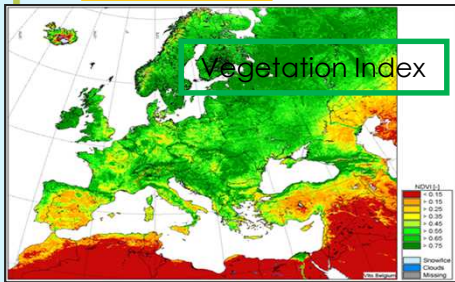
Burnt Areas



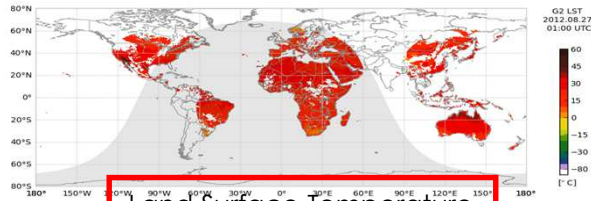
Albedo



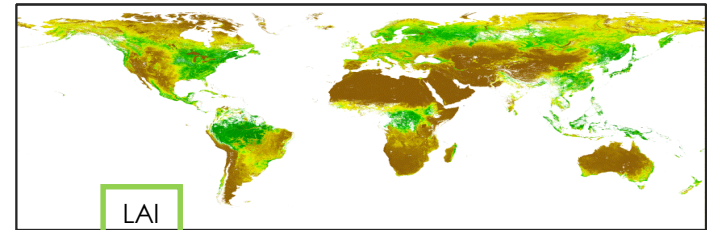
Dry Matter Productivity



Vegetation Index



Land Surface Temperature



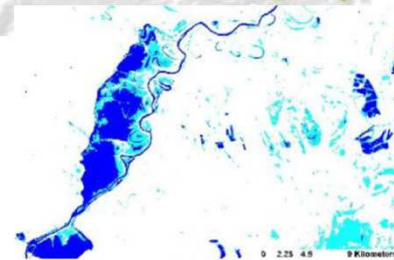
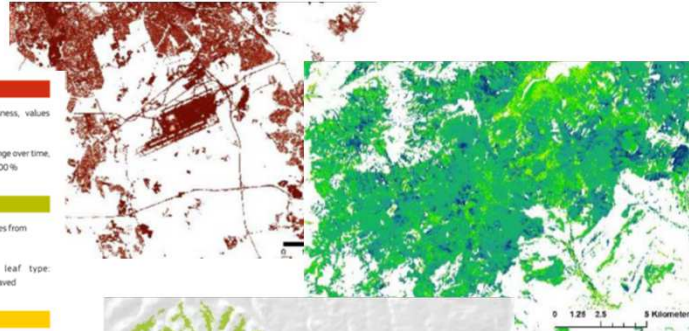
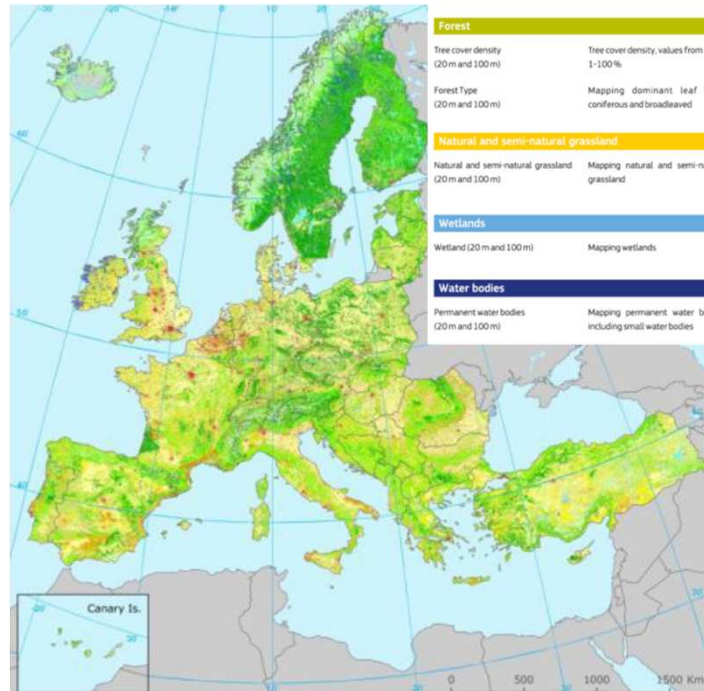
LAI



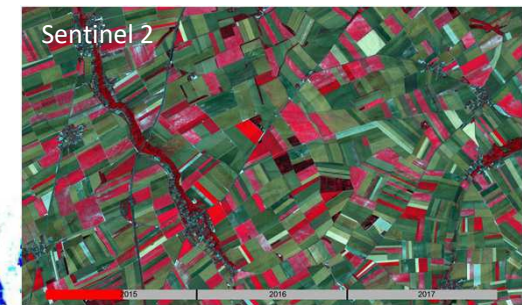
Land
Monitoring

Copernicus Land Monitoring Core Services

wall-to-wall coverage



information
services at
local, national,
European level

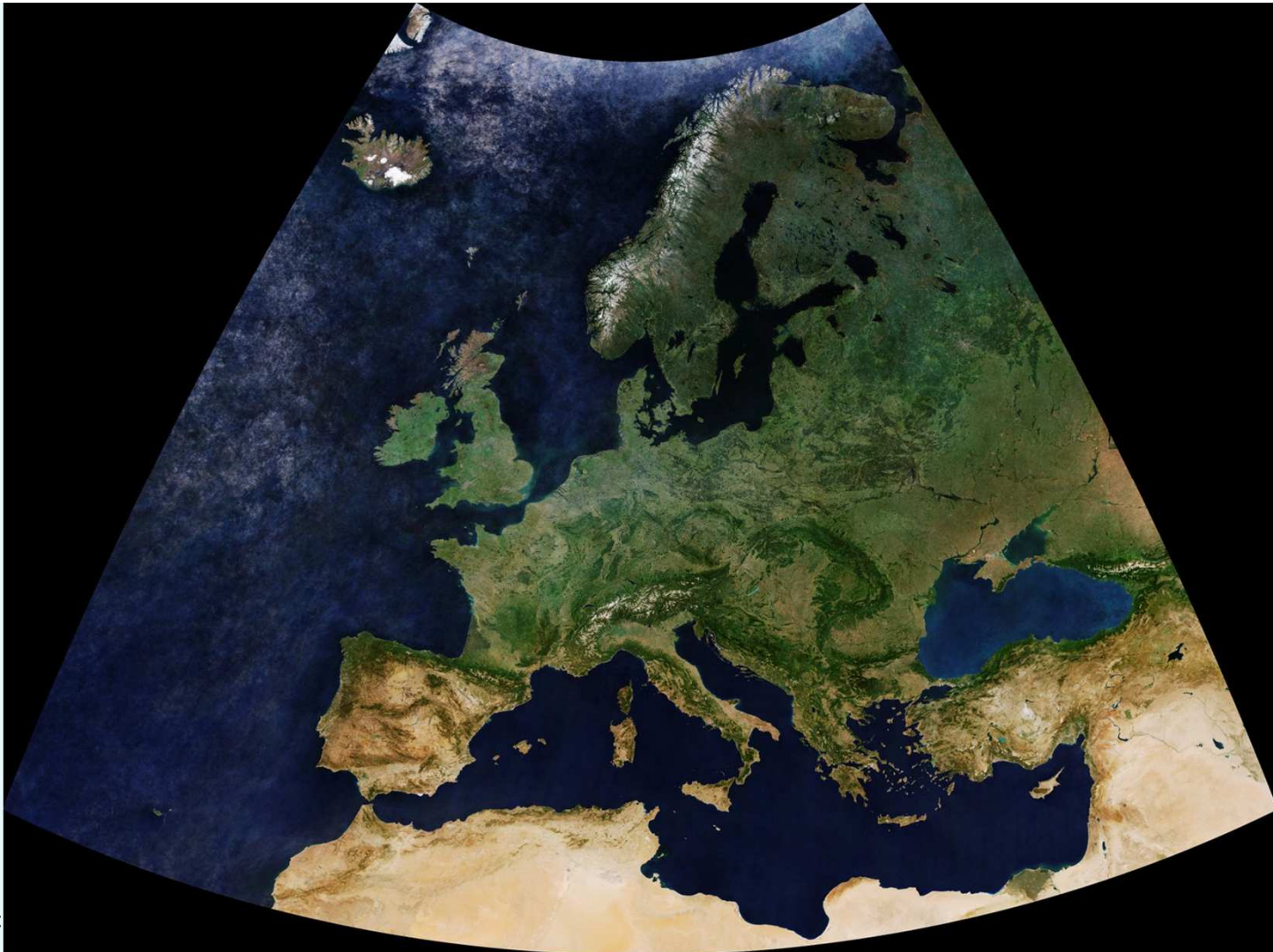


Long-term time series
change monitoring



Land
Monitoring

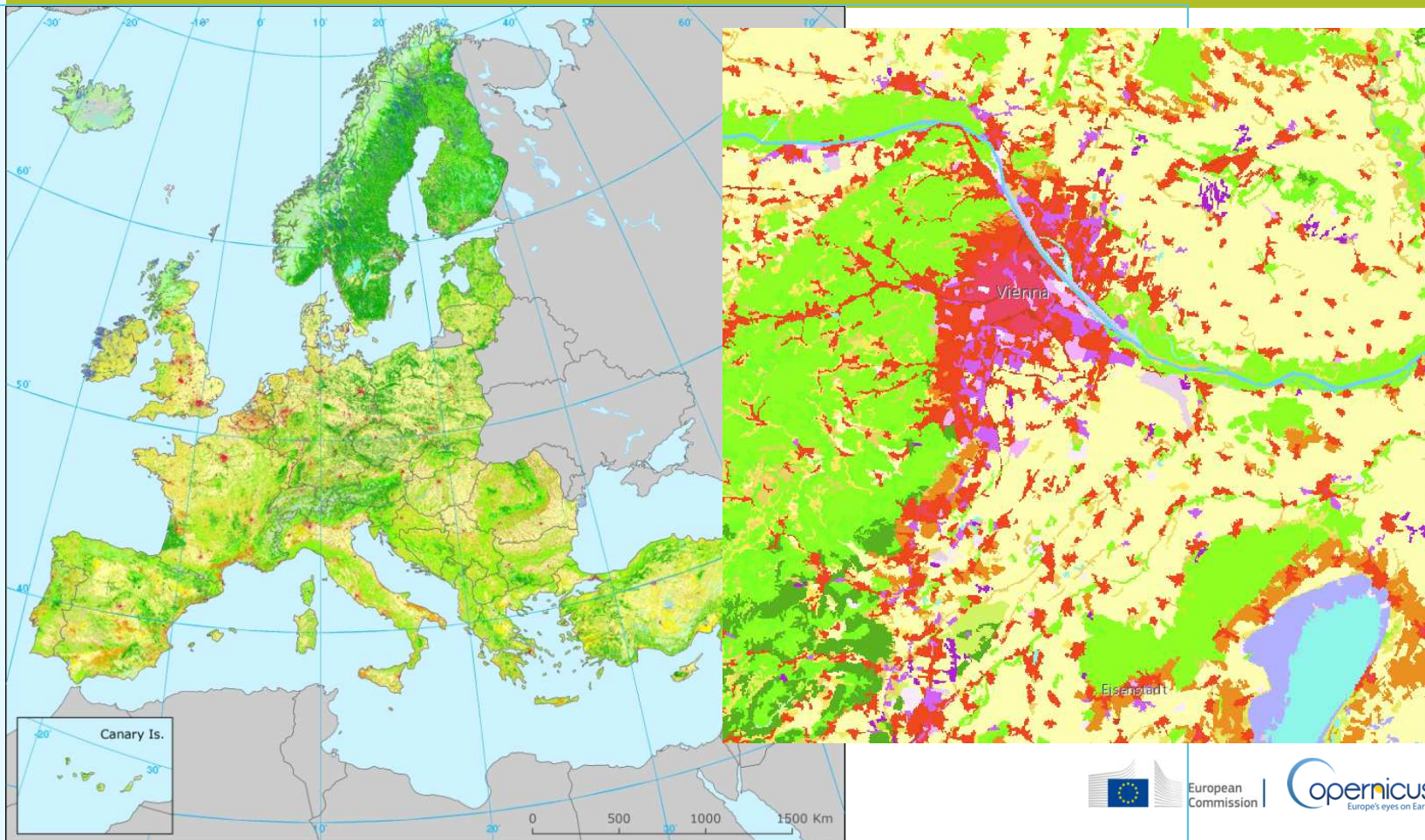
Source:
Sinergise,
S3 mosaics





Land
Monitoring

CORINE Land Cover time series: 1990 – 2000 – 2006 – 2012 - 2018



European
Commission

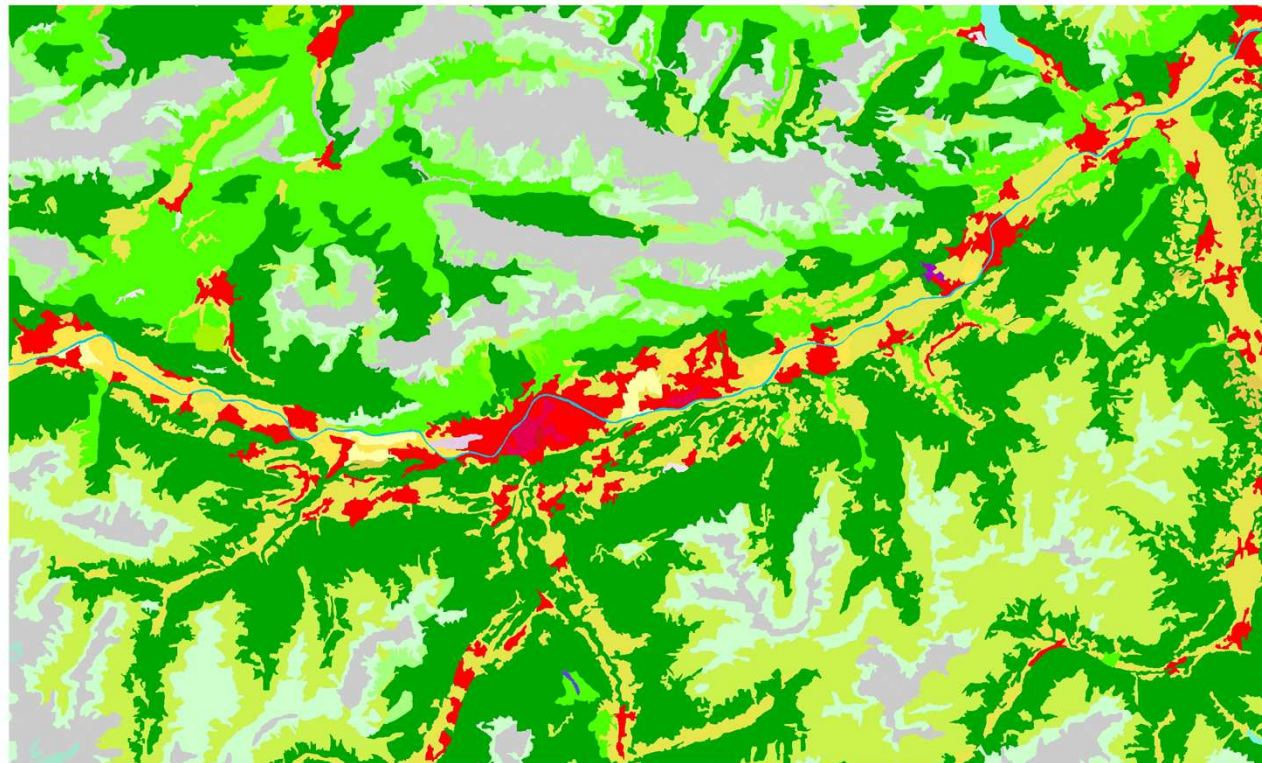




Land
Monitoring

Urban Atlas 2006 – 2018 (Innsbruck, AT)

CLC 1990





Land
Monitoring

pan-European component - High Resolution Layers (HRL's)

Imperviousness and imperviousness change products

- Degree of Imperviousness and Imperviousness Change (0-100%)
- 2006-2009-2012-2015
- 20 m and 100 m

Forest

- Tree Cover Density (0-100%)
- Dominant Leaf Type
- 2012-2015
- 20 m and 100 m

Grassland

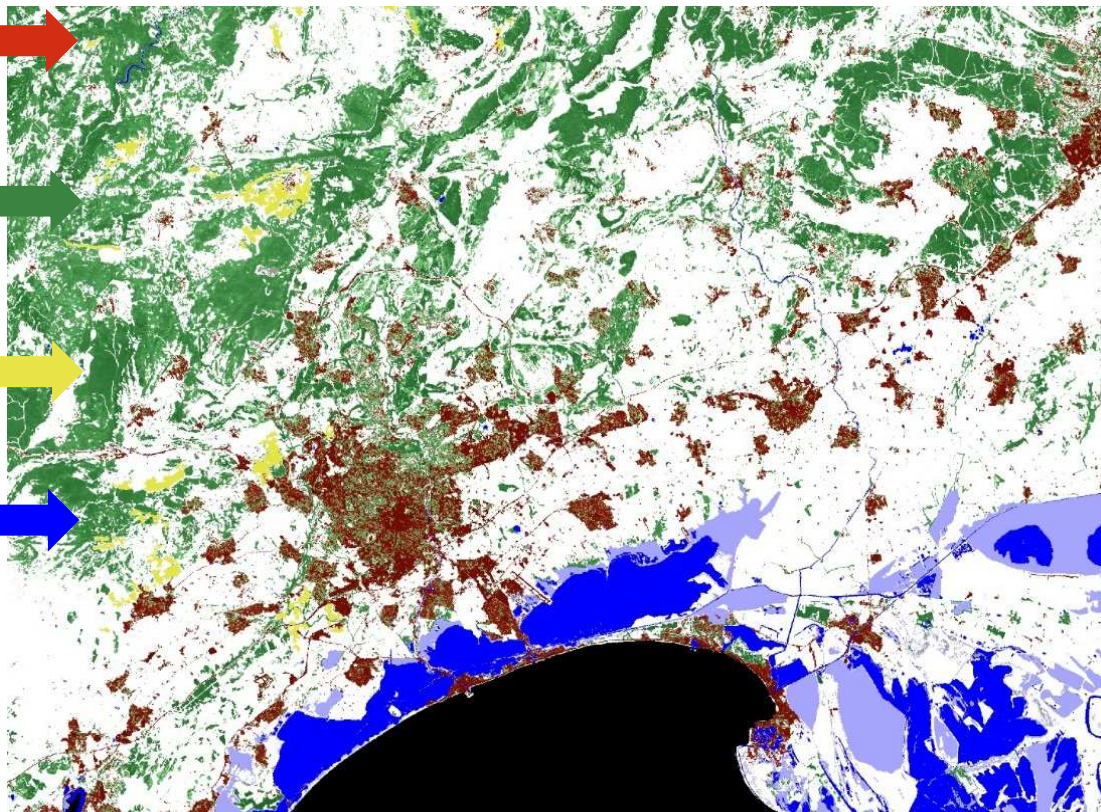
- Grassland (binary)
- 2012
- 20 m and 100 m

Water and Wetness

- Permanent/Temporary Water
- Permanent/Temporary Wetness
- Based on 2009-2016 time series

Small Woody Features

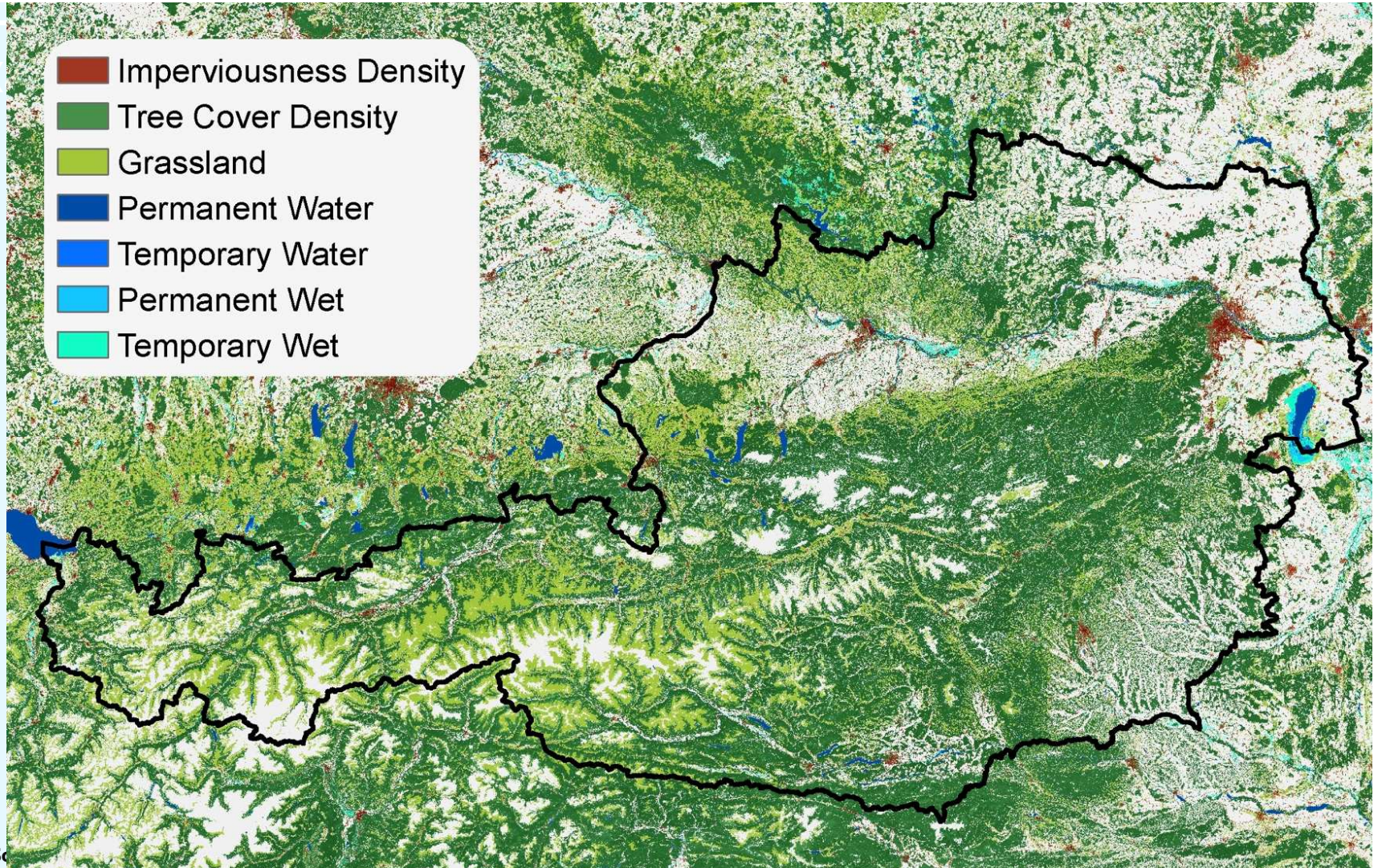
- Linear and patchy structures (binary)
- 2015





Land
Monitoring

- Imperviousness Density
- Tree Cover Density
- Grassland
- Permanent Water
- Temporary Water
- Permanent Wet
- Temporary Wet



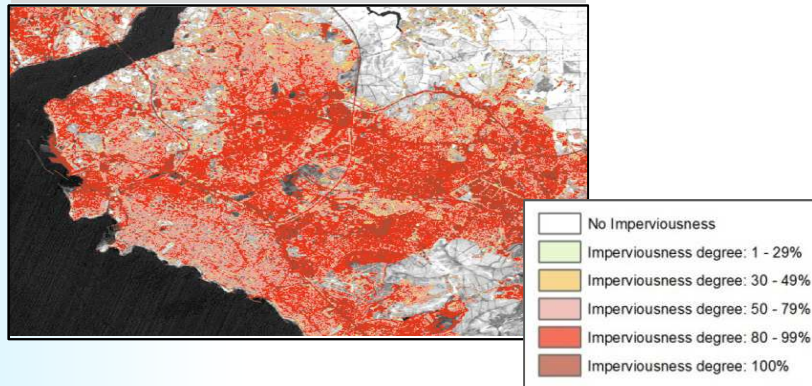
Sc



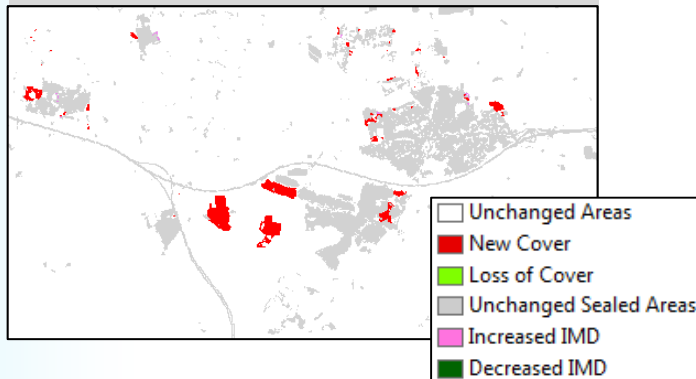
Land
Monitoring

HRL Imperviousness (IMD)

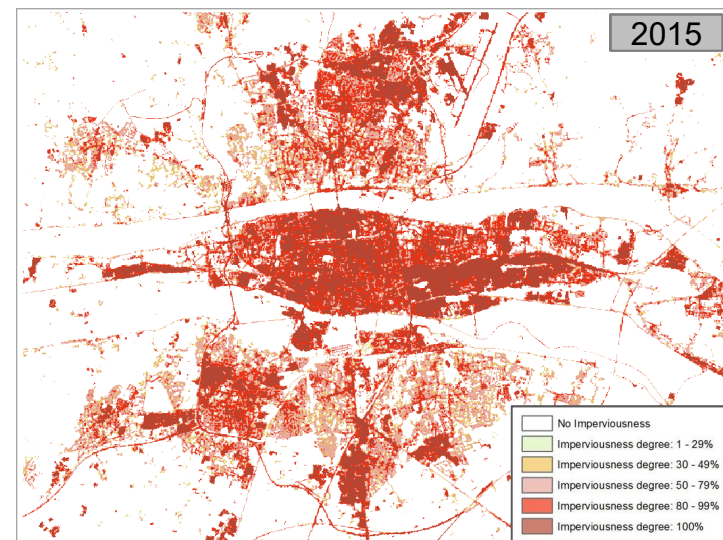
Degree of Imperviousness 2015



Imperviousness Classified Change 2012-2015



Level of sealing of soil:
High-quality information on
imperviousness change in Europe
(2006/2009/2012/2015).



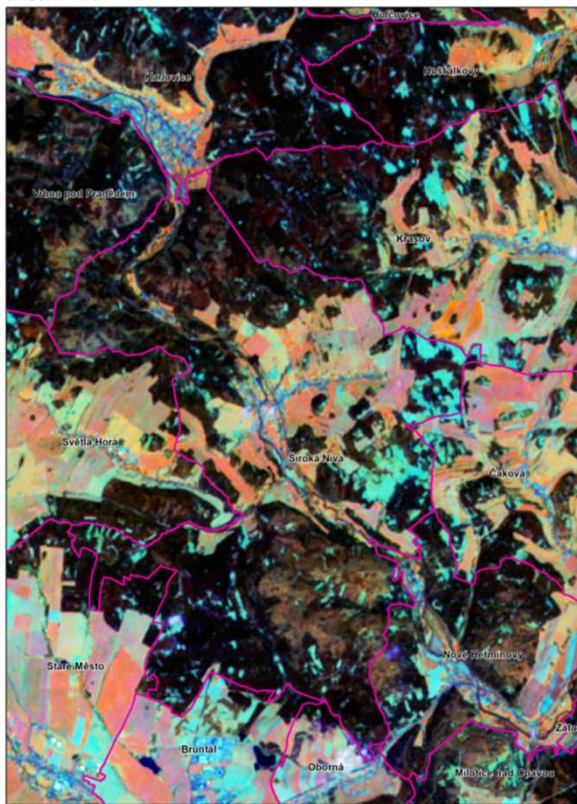


Land
Monitoring

Monitoring Forest degradation in CZ (2011 – 2017)

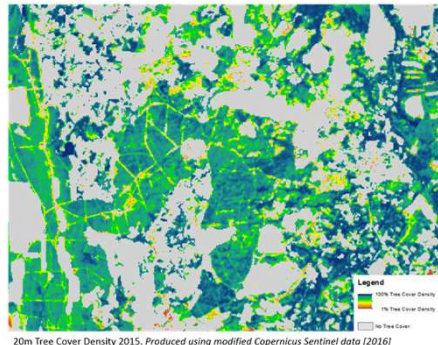
květen 2011

2011



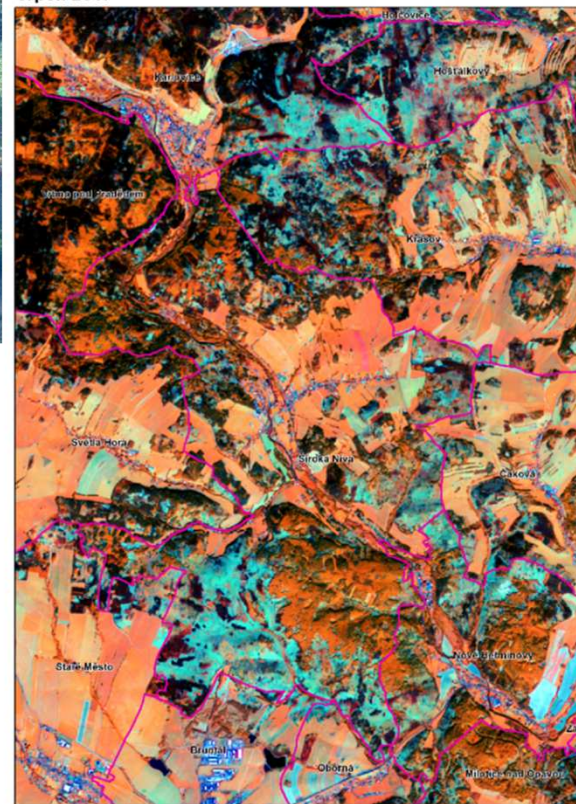
Top: Bark beetle affecting forests

Bottom: Tree Cover Density Map



srpen 2017

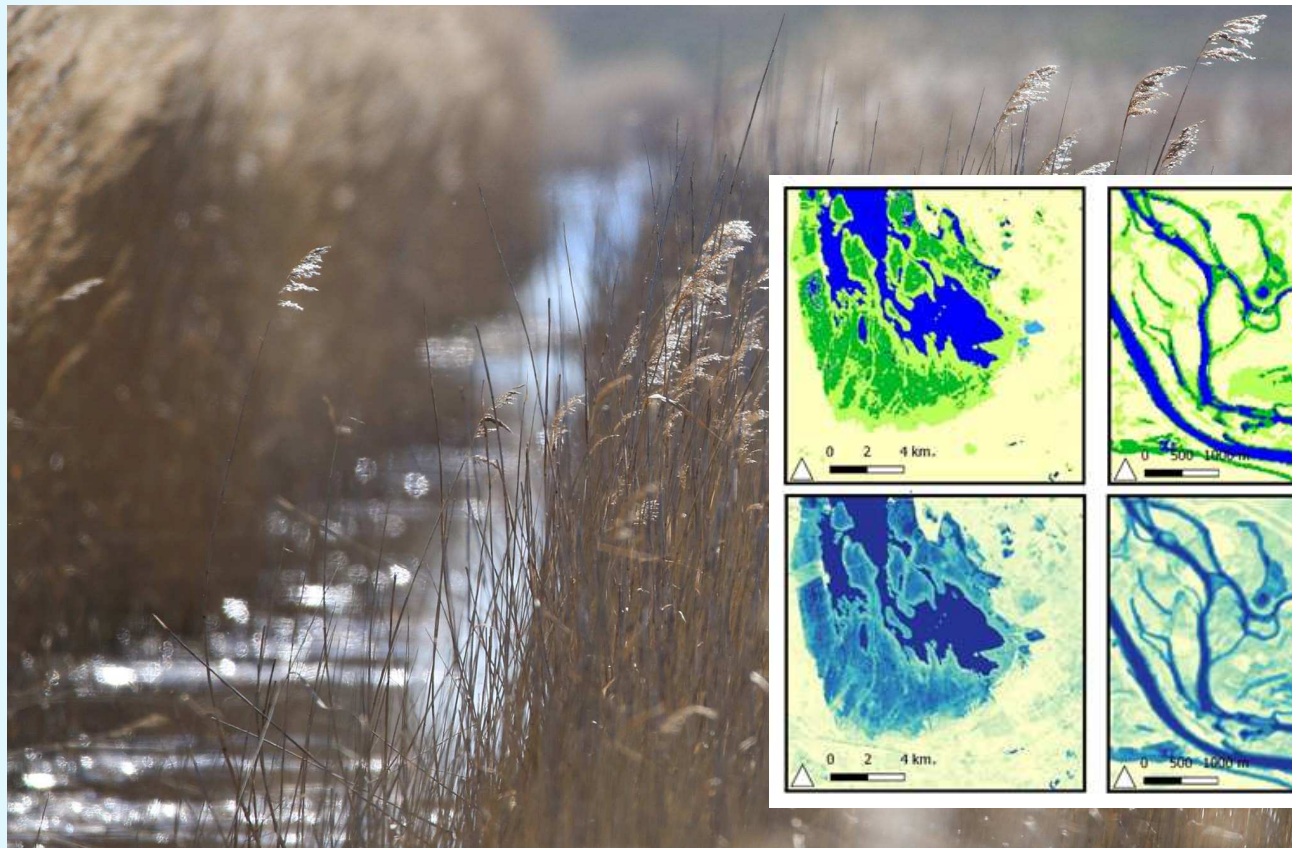
2017





Land
Monitoring

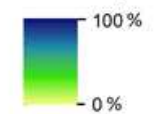
HRL wetness and water (WAW)



Water and Wetness

- Dry areas
- Permanent water
- Temporary water
- Permanent wet
- Temporary wet
- Unclassifiable

Water Wetness Probability Index (WWPI)





Land Monitoring

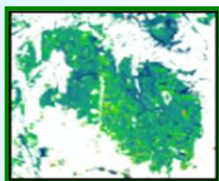
Land portfolio interdependencies: Hotspot Monitoring component: Riparian Zones example



VHR imagery

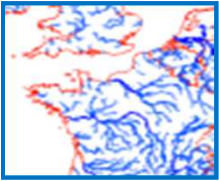
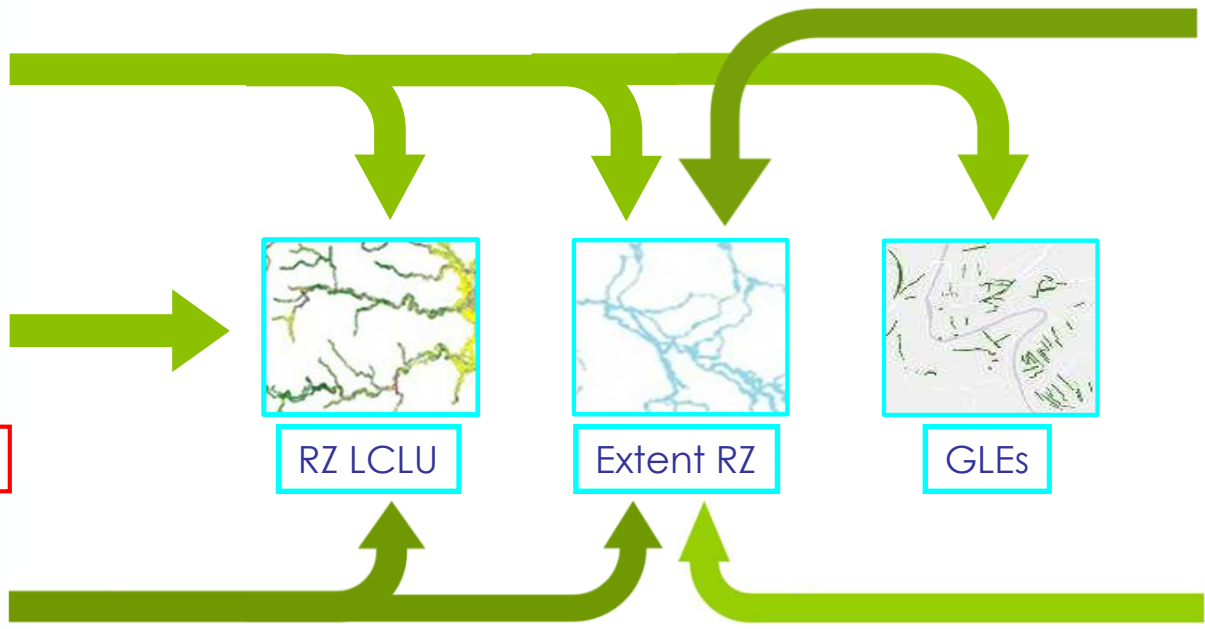


Urban Atlas



HRL Forest

21



EU-hydro

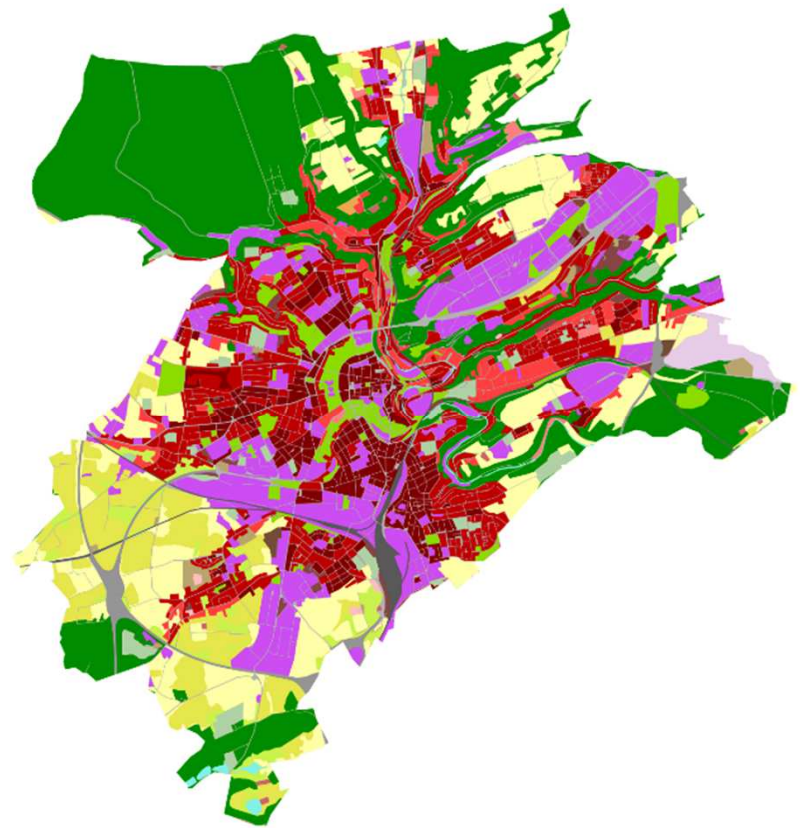
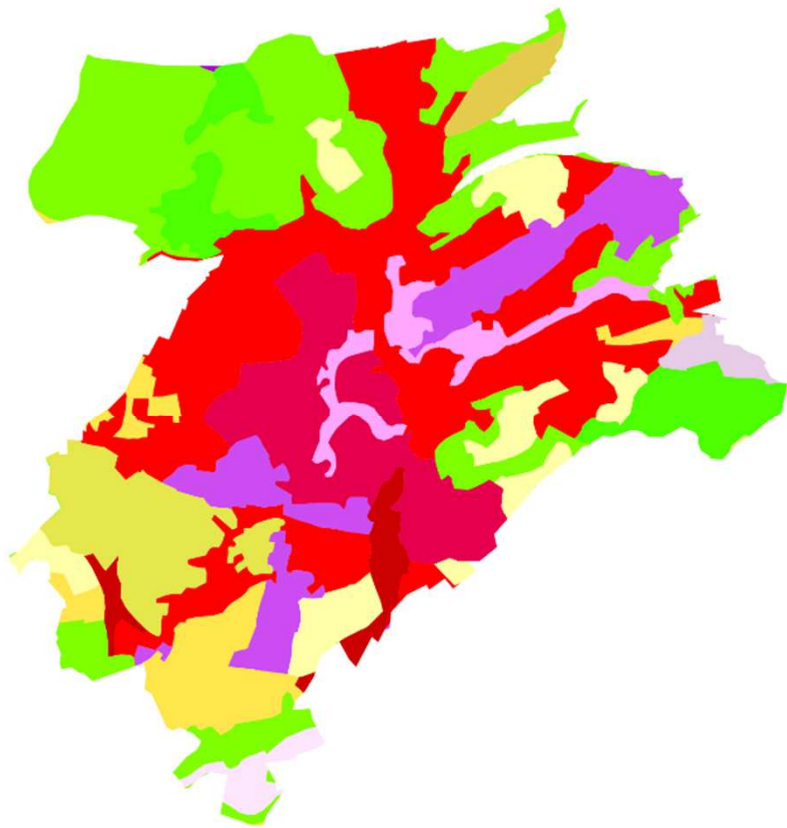


EU-DEM



Land
Monitor

From pan-European (CLC) to hotspot (Urban Atlas) monitoring

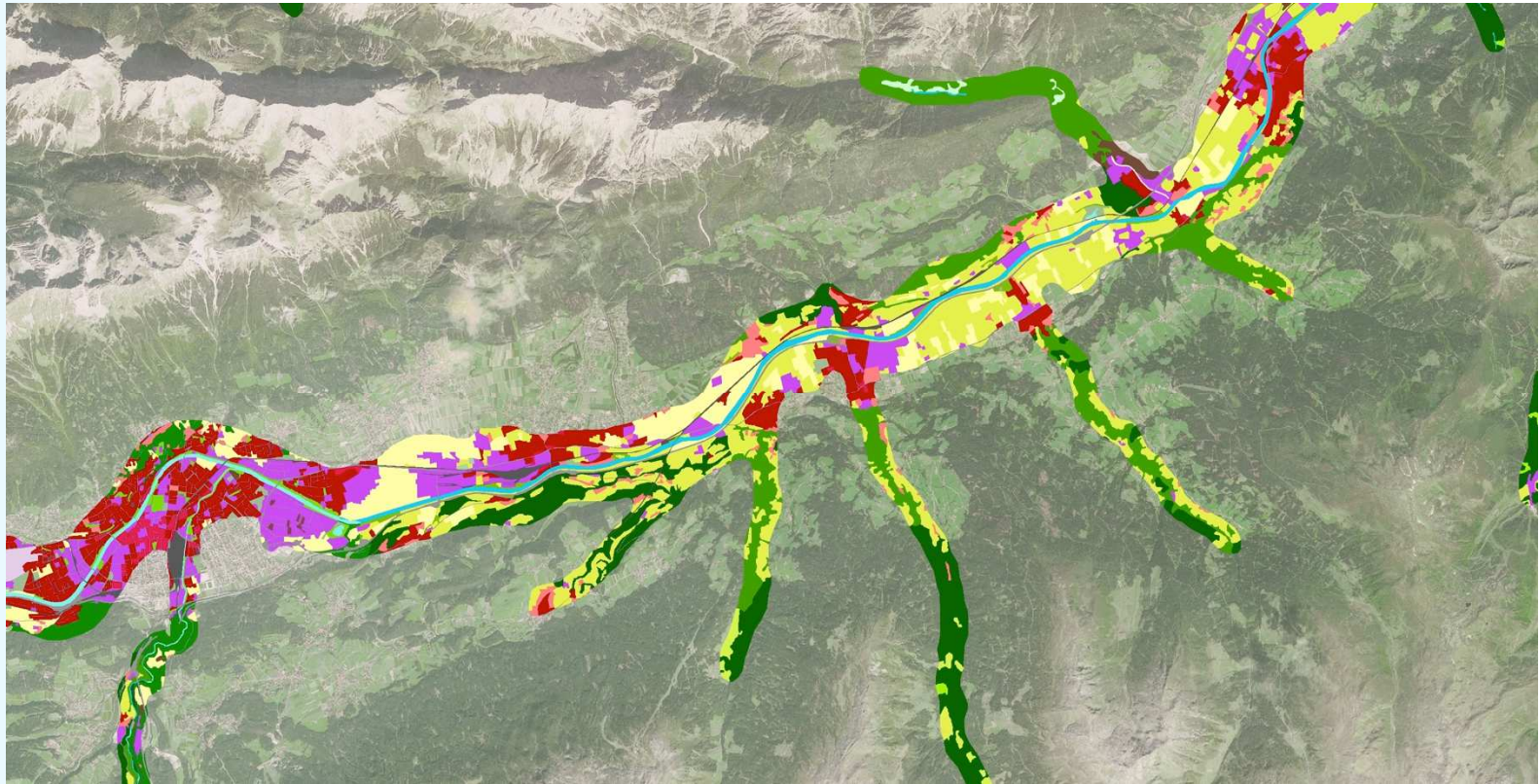


Luxembourg



Land
Monitoring

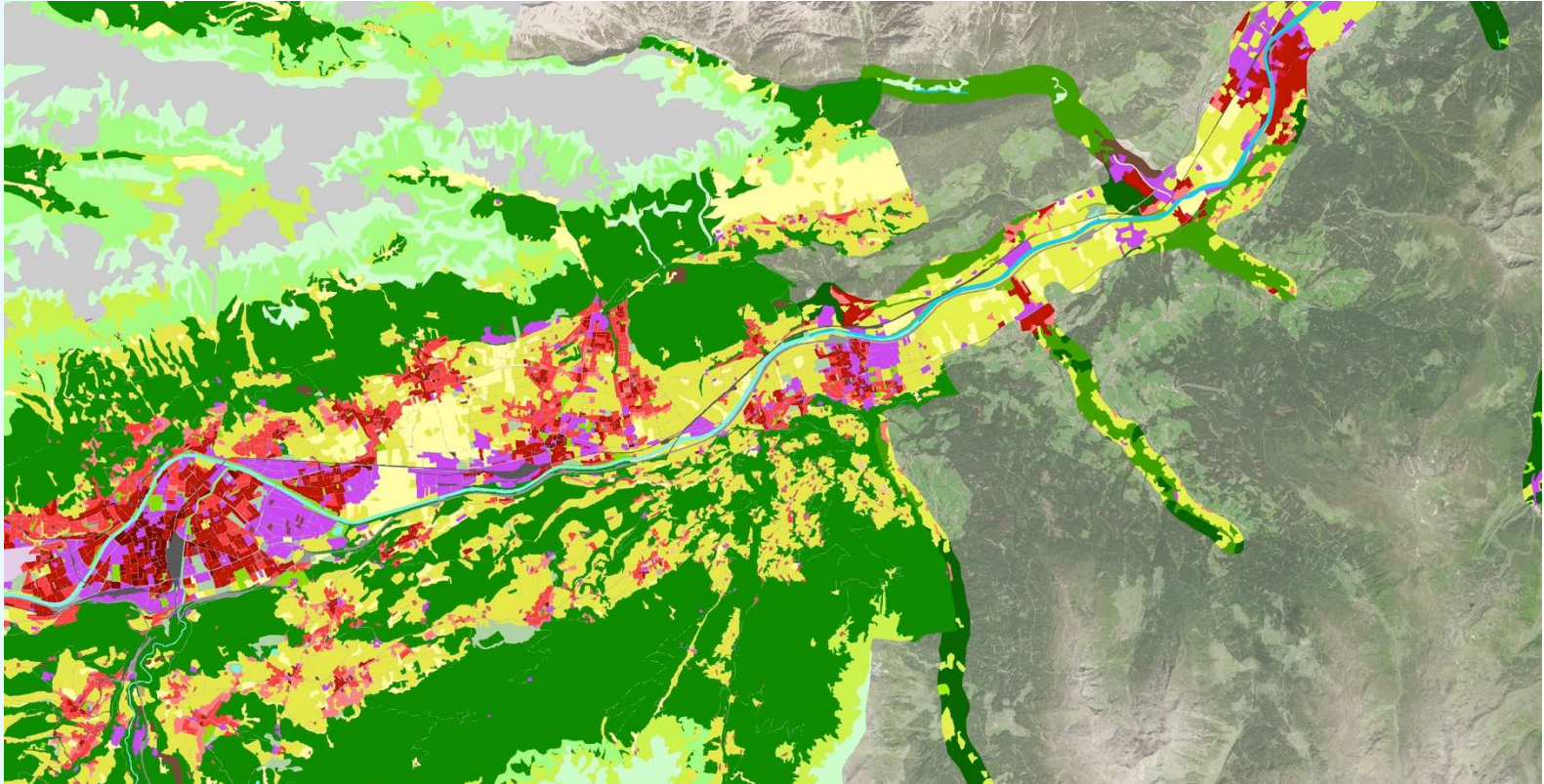
VHR + Riparian Zones





Land
Monitoring

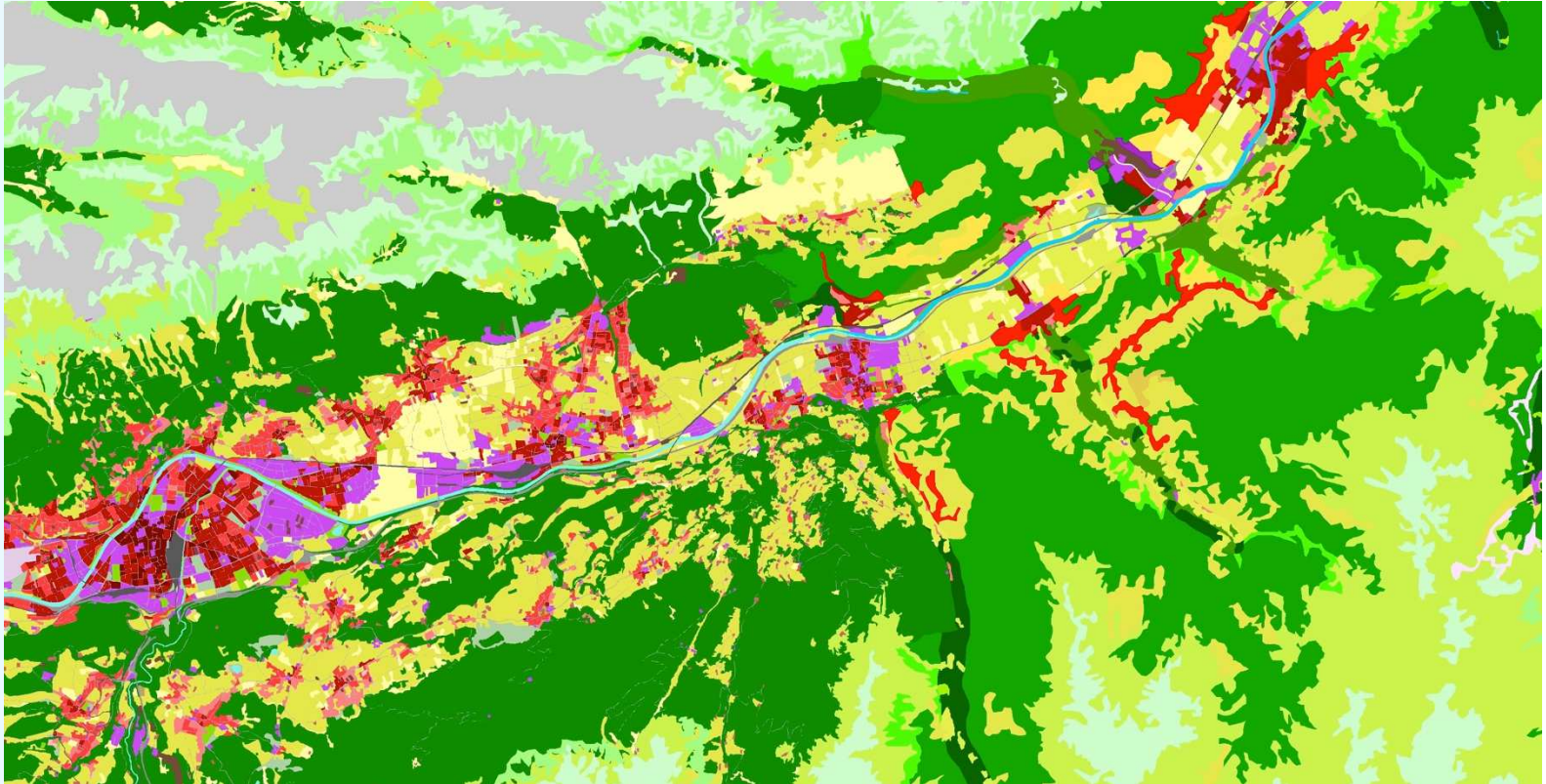
VHR + RZ + Urban Atlas





Land
Monitoring

VHR + RZ + UA + CLC

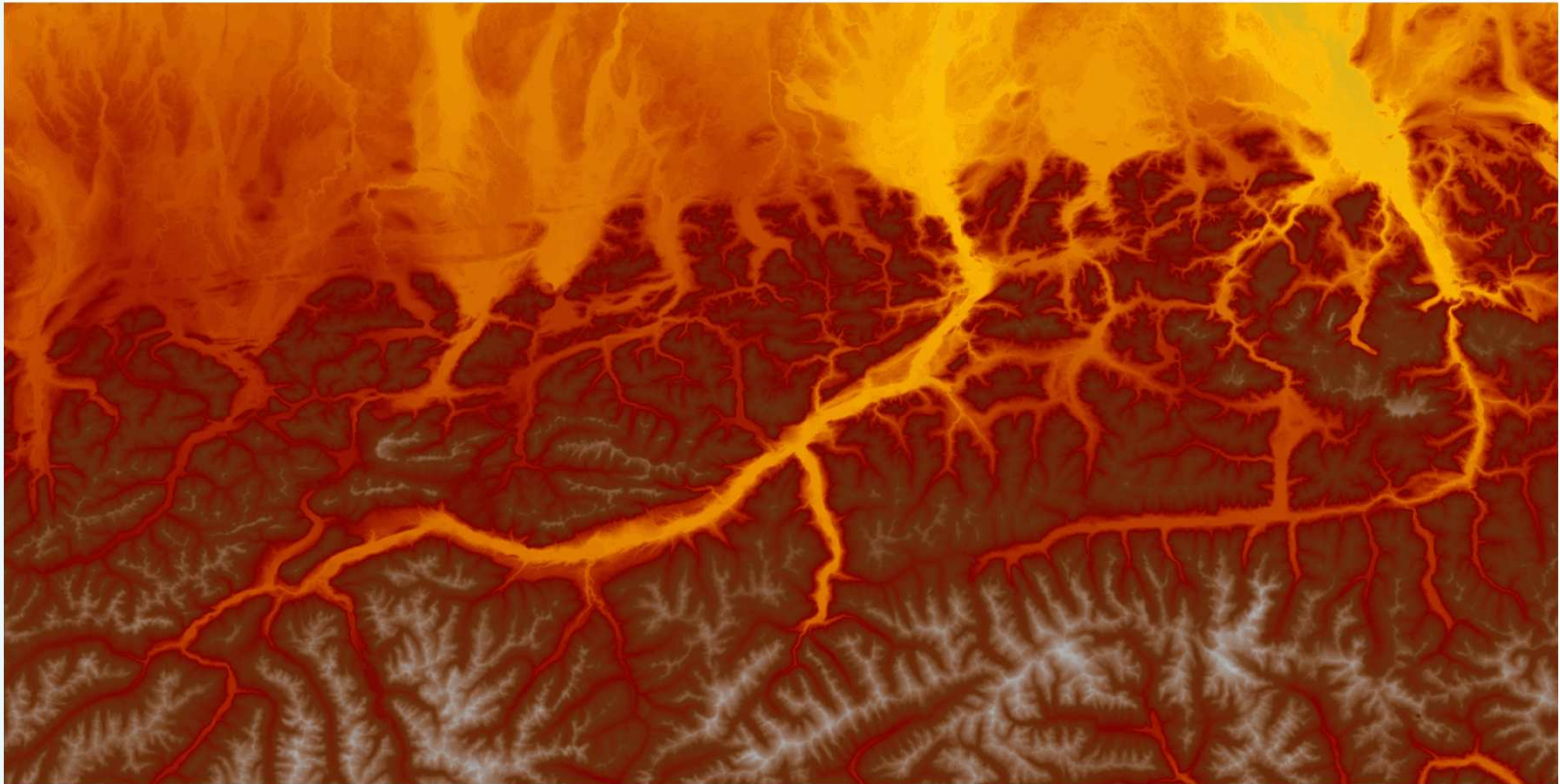




Land
Monitoring

EU-DEM

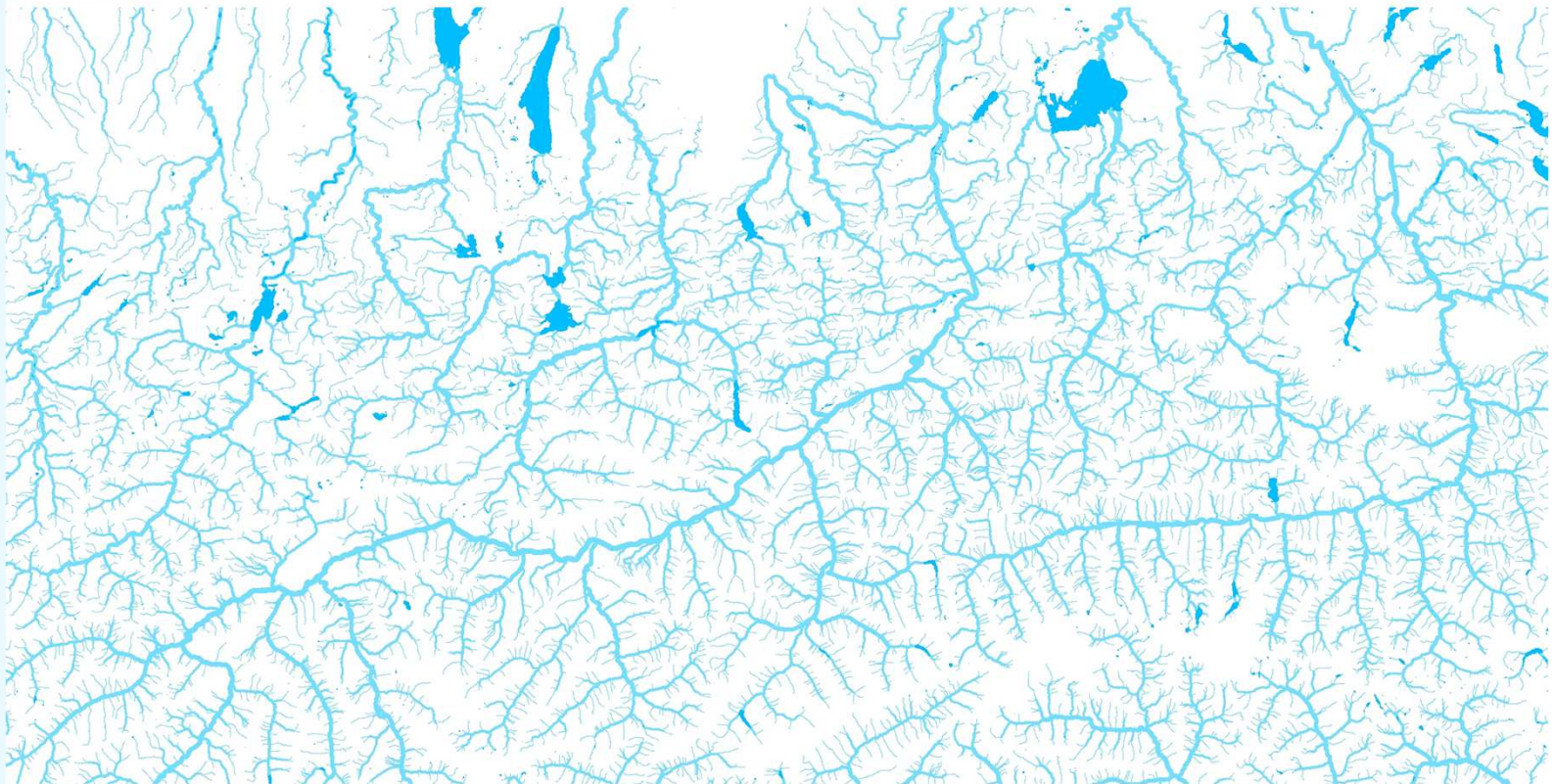
(height, shaded relief, slope, aspect, hill-shade)





Land
Monitoring

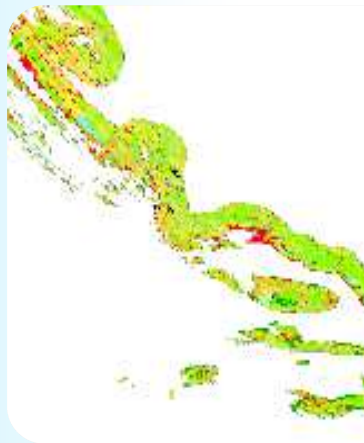
EU-DEM & EU-hydro



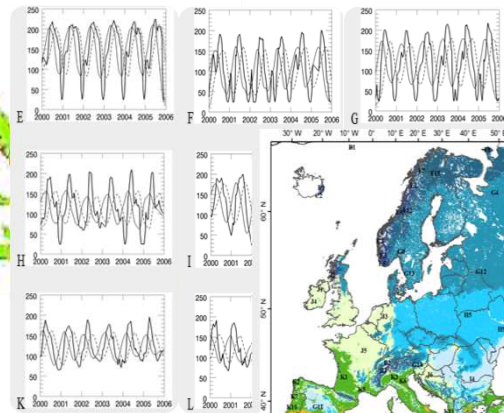


Land
Monitoring

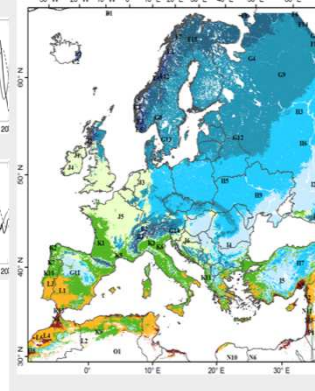
New products (CZ, HR-pheno, Snow & Ice)



LC/LU status maps
Change maps

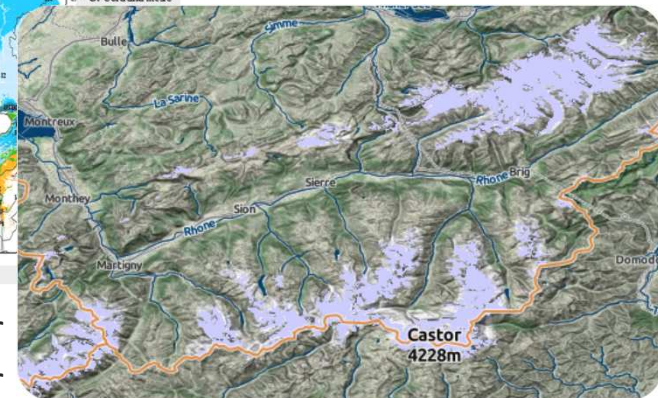


Phenology parameters (SOS, EOS, LOS)
Seasonal trajectories



Legend:
E: Cold and wet
F: Extremely cold and mesic
G: Cold and mesic

Snow Cover
Fractional Snow Cover





Land Monitoring

Land monitoring Dissemination



European
Commission





Land
Monitoring

European level dissemination activities: the Copernicus land portal

Focus on:

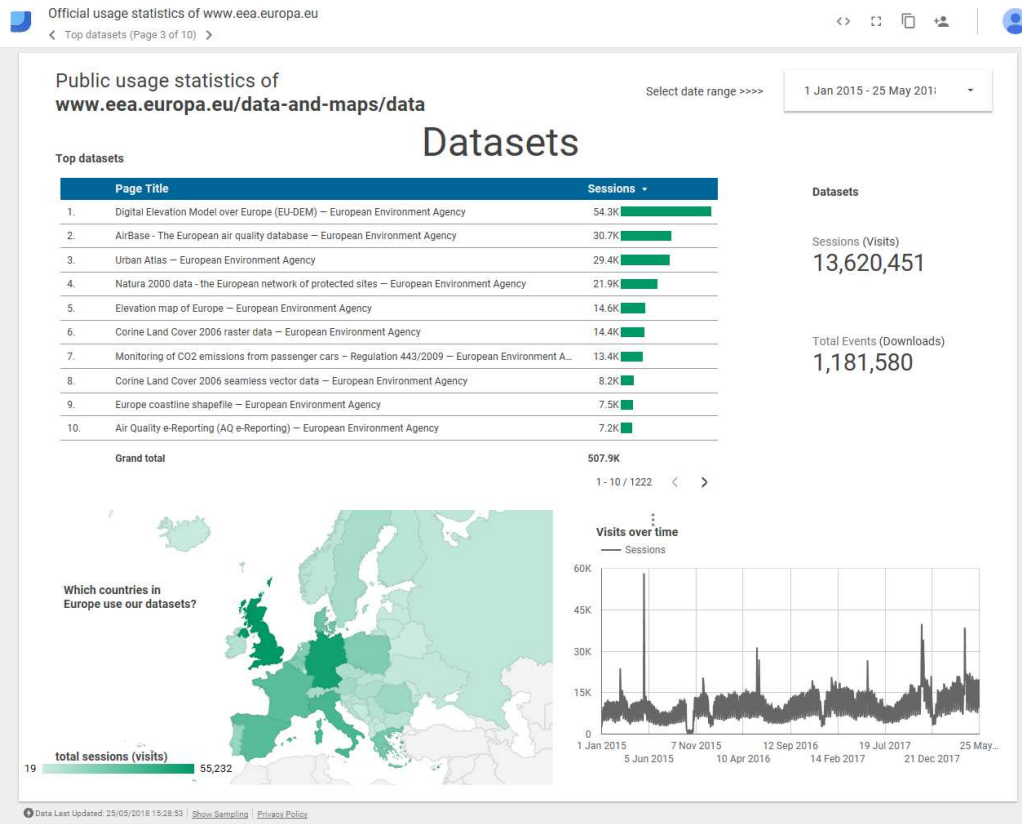
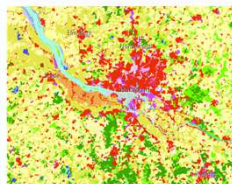
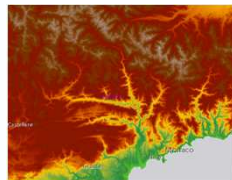
- Easy access to the products:
 - discover, view, WMS / download
- INSPIRE compliant metadata
- structural linkages with the open data initiatives on European and global level, in order to promote the use of the Copernicus Land products





Land
Monitoring

4 CLMS products in the top 10 of most used EEA data 2015-2018



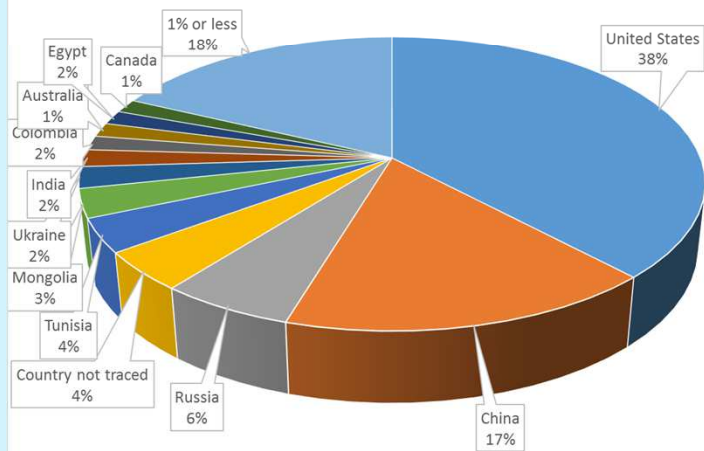


Land Monitoring

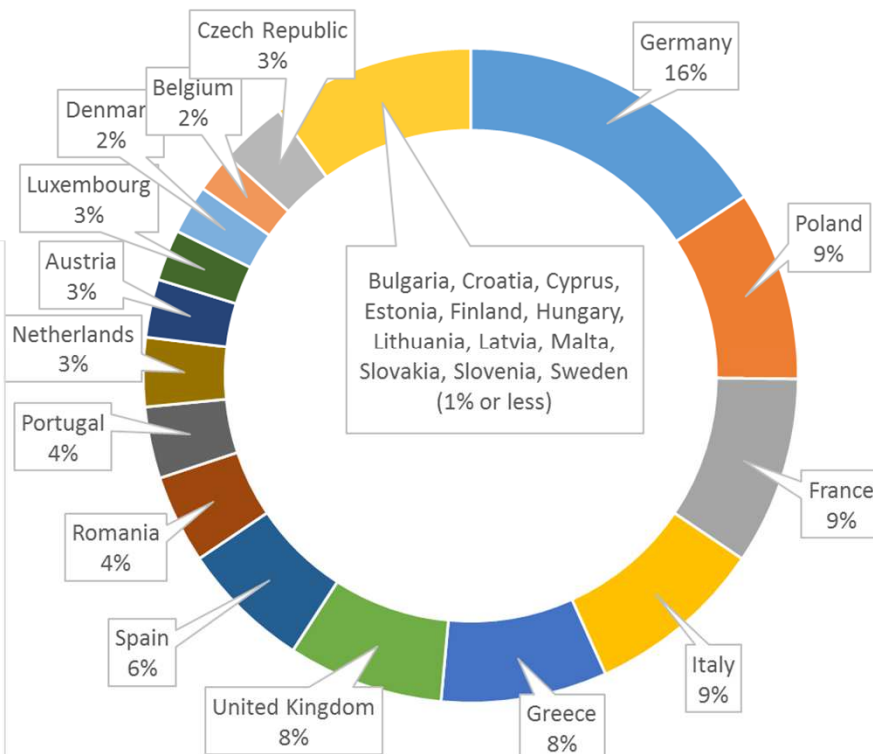
Geographical distribution of downloads in EEA39 (2015 – 2018)

EU Member States remain main users of Copernicus land products

Download statistics from countries outside EEA39



Download statistics from 2015 onwards





Land Monitoring

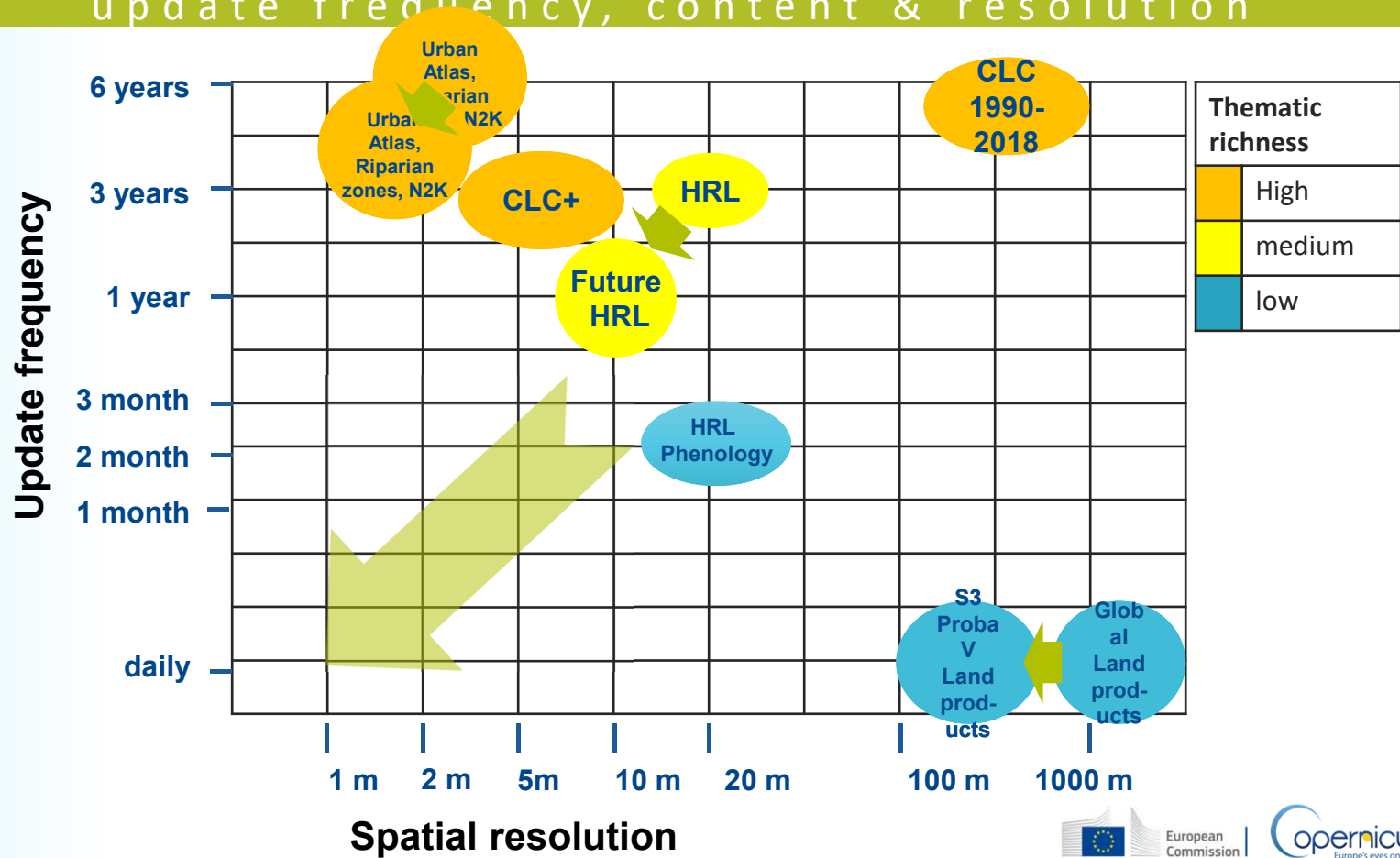
Evolution of the service: towards CLC+

- more demanding user needs from policy side
- more possibilities from technology side
- CLC+ to provide a solution, operational by 2021



Land Monitoring

Copernicus land monitoring: update frequency, content & resolution





Land
Monitoring

More demanding needs for LC/LU information

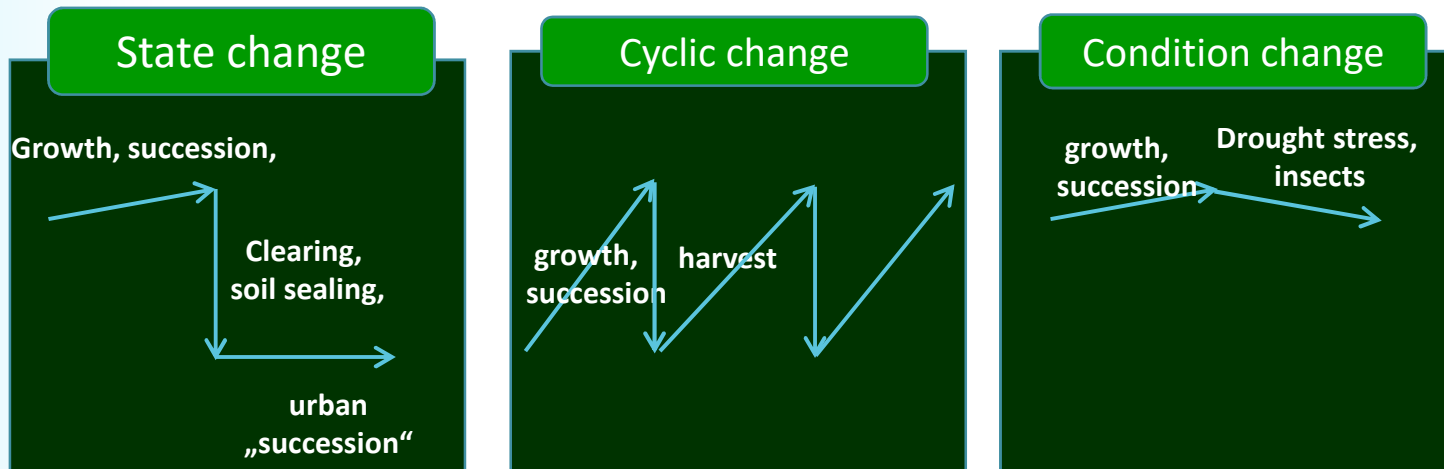
- Continuity of land monitoring information over Europe
- Thematic considerations:
 - New or revised/updated Community legislation, (incl. new MS reporting):
 - Climate change
 - low carbon economy
 - circular economy
 - Energy Union
 - Greening the CAP
 - Forestry
 - Urban planning
 - Biodiversity strategy
 - natural capital
- Global policy: Sustainable Development Goals (SDGs)

- need for LC/LU information:
- full EU28 / EEA39 coverage,
 - harmonised specifications
 - sufficient spatial detail
 - timely availability
 - regular updates (yearly)

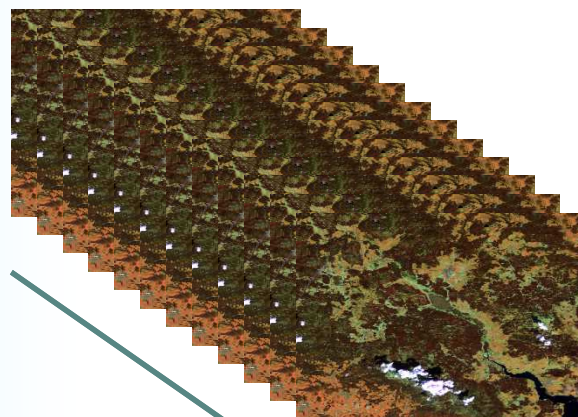


Land
Monitoring

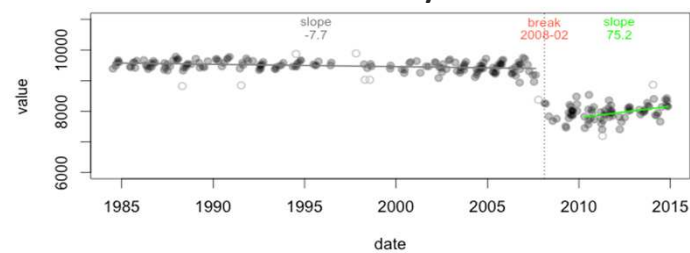
The challenge of Change Detection in Land monitoring



© Wulder, Berlin, 2014, EARSeL



Time series analysis





Land
Monitoring

Requirements summary: driver for new concept for CLC+

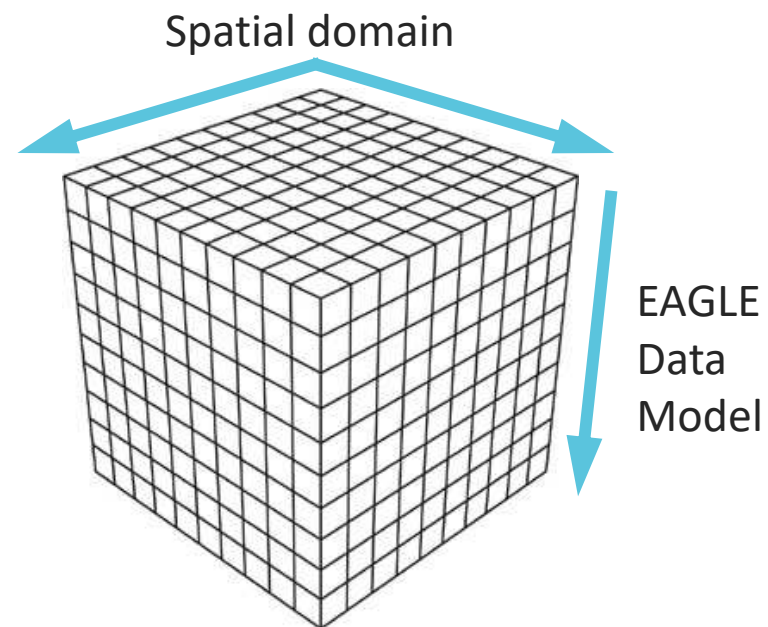
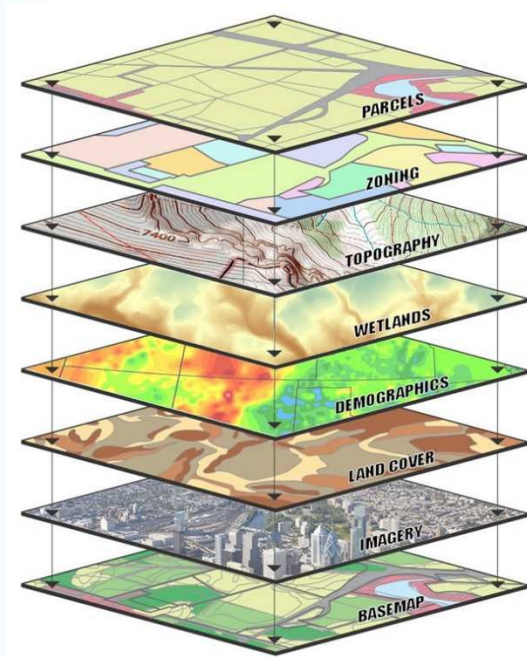
- Summary of requirements review
 - MMU 0.5 to 5 ha, 0.5 to 1 ha for LULUCF
 - Change layer MMU = status layer MMU
 - Revised thematic content (more classes, increased characterisation)
 - 3 year to yearly update cycle
 - Pan-European coverage (EEA-39)
- Aspects of
 - Current CLC
 - Local Components
 - HRLs
 - EAGLE Group developments





Land
Monitoring

CLC+ a new concept in Land Cover / Land Use



Source: CSU,
<http://heleneloyan.cikeys.com/update/gis-layers/>



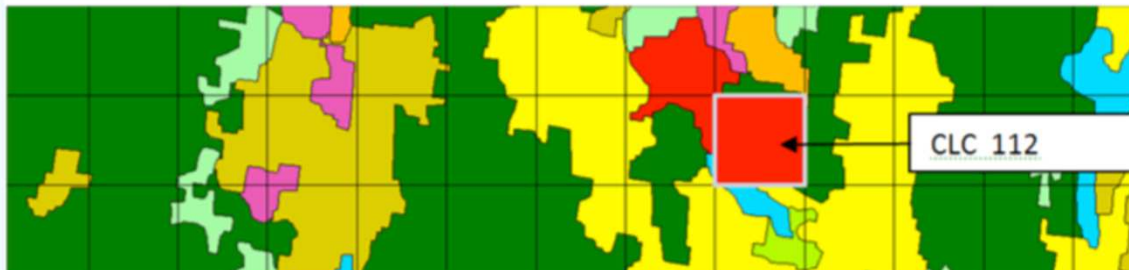
Land
Monitoring

Vector, raster, grid cells



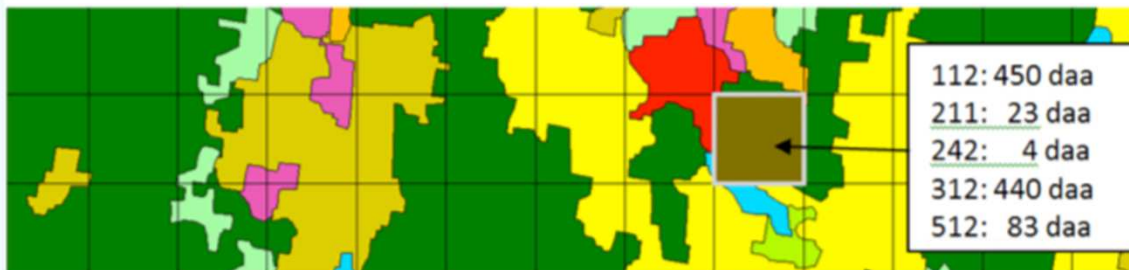
CLC vector

CLC with 1 km raster/grid superimposed



Raster

Raster representation: A single class is assigned to each pixel



CLC-core grid,
populated with
thematic info

Grid representation: The internal composition of the grid cell is kept as an attribute vector.



Land
Monitoring

